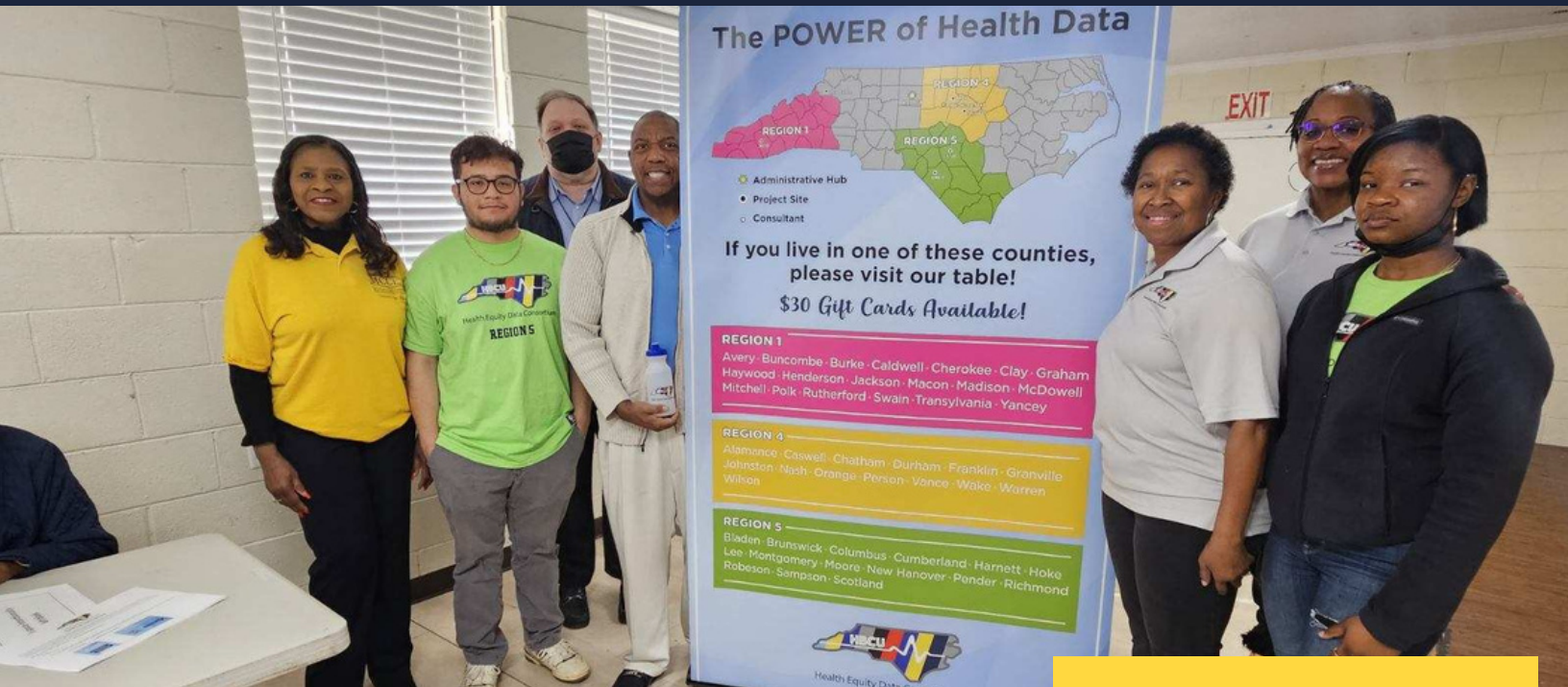


MT. CALVARY CENTER For Leadership Development

NEWSLETTER • SPRING 2024 • MCLEADERSHIP.ORG



PARTNERSHIP GATHERS ESSENTIAL DATA ON PANDEMIC'S IMPACT

Mt. Calvary Center for Leadership Development was pleased to recently partner with the Health Equity Data Consortium and lead consortium partner UNC Pembroke. As part of a comprehensive regional survey on the impact of the pandemic, additional survey data from area residents in Southeastern North Carolina was needed, particularly from Pender County. Through our Community Health Initiative, we were able to recruit over 200 residents in a very short time to complete the survey and provide vital information. Those who completed the survey received a \$30.00 gift card for their time.

Survey information provided will help the consortium determine what challenges communities in North Carolina following the pandemic are facing and will work to reduce health disparities that are often far too prevalent in our area. We are thankful that so many of our residents took the time to participate and complete the survey.

UPCOMING EVENTS

SUMMER CAMPS REGISTRATION OPEN

Registration is now open for the MCCLD 2024 Summer Camps. Interested students in grades 5th- 9th are encouraged to sign up. Signup link is on the website home page at the top.

ANNUAL PRESIDENT'S SOIREE' & GALA

Save the date for the last weekend in July when we host our Annual President's Soiree' and Anniversary Weekend.

REGIONAL SCHOOL LEADERS HOSTED

We were pleased to recently host regional school leaders including teachers, counselors, and principals at our Wallace Leadership Center to share plans for our expanded youth programs and also discuss how we could provide greater services, programs, and outreach in support of students. Ongoing classes are built on our highly successful Vocational, Industrial, and College (VIC) Preparatory Academies that we have offered in recent years.

Several of the upcoming Academies will focus on S.T.E.A.M. Careers, Health and Medical Careers, Culinary Careers, and Agriculture Careers with more being planned. Our highly praised Aviation Academy will also continue offering multiple sessions throughout the year.

We appreciate the valuable input of our collaborative partners as we work to provide exceptional learning and experiential opportunities for our area youth.



PRESIDENT'S MESSAGE

DR. JIMMY T. TATE

We are very pleased to have begun 2024 with a variety of new programs and initiatives. We appreciate such strong support in all of our many outreach events and activities. As we move towards Summer, we will again be offering a full array of summer camps and special programs for our area youth. I encourage you to visit our website and Facebook pages regularly as we announce new dates and program offerings. Our community health work continues and we have formed expanded partnerships to offer even more events to better support the overall well-being of our communities.

I encourage you to visit our Wallace Leadership Center if you have not been to any events or programs lately to see how we have continued to expand and have added new office space for our employees and also greater space for meetings and events.

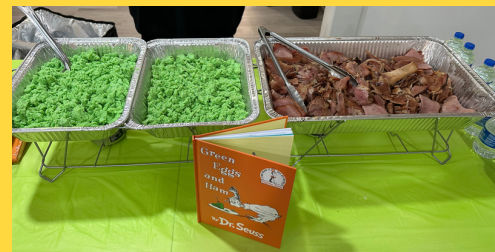
Thanks to all of our valuable donors who continue to support our valuable work and allow us to impact so many people. Our programs and services directly impact over 10,000 people annually throughout Southeastern North Carolina. I also hope you will save the date for the last weekend in July when we host our Annual President's Soiree' and Anniversary Weekend. More information on this will be shared soon.

I look forward to seeing you soon at one of our events and as always, please reach out to me or any member of our team if you have any questions or if we may provide any additional information.

"OUR PROGRAMS AND SERVICES DIRECTLY IMPACT OVER 10,000 PEOPLE ANNUALLY THROUGHOUT SOUTHEASTERN NORTH CAROLINA."

DR. SEUSS BIRTHDAY EVENT CELEBRATES JOYS OF READING

Our Wallace Leadership Center recently featured special delicacies including green eggs and ham as we celebrated the creativity of Dr. Seuss and the joys of reading. Area youth enjoyed a fun-filled afternoon of great food, and hands-on activities that allowed for their creative energy to be on full display. The joys of reading were also highlighted and allowed for a time of fun, laughter, and fellowship. We appreciate the Cat in the Hat also finding time in their busy schedule to make a special guest appearance. We look forward to this becoming an annual event as part of our many youth activities and programs.



EASTER EVENT PROVIDED FUN FOR CHILDREN OF ALL AGES

We were pleased to host a new event for children of all ages in our Wallace and Wilmington Offices. This family-friendly event provided free food, games, an opportunity to paint, decorate eggs, and of course have some time to visit with the Easter Bunny. Thanks to everyone who made this event possible and for spending a great afternoon with us.



AVIATION ACADEMY CONTINUES WITH AMAZING HANDS ON OPPORTUNITIES FOR PARTICIPANTS

MCCLD kicked off its Spring Aviation Program on February 10. Ten students are participating in a 6-week long program to learn about the amazing world of flight. The first guest speaker, First Officer Brock Houghton, provided some insight into corporate flying. Also during week 1, the students built model rockets that will be fired off later in the program. The young aviators took a trip to Stag Airfield in Burgaw to visit with the EAA Chapter 297 and other fellow aviators. The program continues to be a success and we encourage all seventh through tenth graders to consider participating and sign up early as space is extremely limited. Dates for the summer program will be announced soon.



UPCOMING CPR CLASS PLANNED

Our Community Health Division is pleased to be organizing an upcoming Adult and Pediatric CPR Class for members of the community. The class is currently being planned for April 25 from 1:00 p.m.-4:00 p.m. at our Wallace Leadership Center. There will be a modest registration fee to cover the costs of materials. We encourage you to sign up early for this special program. More information will be forthcoming.



MCCLD
MT. CALVARY CENTER
FOR LEADERSHIP DEVELOPMENT

CPR TRAINING

APRIL 25 FROM 1 PM TO 4 PM
414 N NORWOOD ST. - WALLACE, NC

Enroll today in our free Adult and Pediatric CPR class, instructed by Lynn Newkirk.

HERE'S WHY YOU SHOULD JOIN OUR TRAINING:

- American Heart Association Certified ✓
- Great for high school students, day-care workers, and teachers. ✓
- Hands-on training ✓

ENROLL BY

910-665-1352
alewis@mtcalvarycenter.org

Mt. Calvary Center For Leadership Development V.L.C. Academy Presents

MCCLD
MT. CALVARY CENTER
FOR LEADERSHIP DEVELOPMENT

ORATORICAL ACADEMY

"Public Speaking For Teens"

Build the confidence and professional development of your teenager by enrolling them in this 6-week academy.

ENROLL NOW

AN ACADEMY FOR TEEN LEADERS

- New Hanover County
- Free Admission
- Middle School Students
- Six Weeks
- Lifelong Skills
- Final Week Oratorical Contest

For More Info Call: 910-665-1352

For More Information: mcleadership.org

APRIL 9-MAY 14

Tuesday
4pm-5:30pm

2709 Market St. Suite 101
Wilmington, NC 28403

INAUGURAL ORATORICAL ACADEMY PLANNED FOR YOUTH

As part of our expanding programs for youth, we are pleased to announce our inaugural Oratorical Academy for middle school students. The six-week long program will be held at our Wilmington Office on Tuesdays beginning on April 9 and will be from 4:00 p.m.-5:30 p.m. Important skills will be reviewed on the art of public speaking and gaining greater self-confidence while sharing your message. The final week will conclude with an oratorical contest.

Please call our office today for more information or if you know of a middle school student who would benefit from participating.



Contact Us:

Robert Turner
Chief Communications Officer
Email: rturner@mtcalvarycenter.org
Phone: 910-665-1352

Locations:

Wallace Campus:
414 North Norwood St
Wallace, NC 28466

Wilmington Office:
2709 Market St. Suite 101
Wilmington, NC 28403